

Bushing Well
200A | CH200BW



ink-energy.com

APPLICATION

The Chardon 200A 15kV, 25kV, 28kV and 35kV Class bushing wall meets all requirements of IEEE standard 386-1995 (separable insulated connector system). It is designed for the termination of primary winding leads at the face plate of oil ed (or approved equivalents) single phase and three phase transformers and switchgear rated at 8.3/14.4kV, 15.2/26.3kV, 16.2/28.0 kV and 21.1/36.6 kV. The Chardon bushing well is externally mounted and clamped in place with either stainless steel or galvanized mild steel 3 or 4 hole mounting clamps. It ts in a 2.56inch (65mm) hole on the apparatus tank wall. The Chardon bushing well is designed to accept Chardon bushing inserts, as well as all others meeting IEEE Standard 386. It's knurled copper stud, with rolled threads, provides excellent conductivity. Chardon bushing wells are molded in-house, under Chardon's strict quality assurance procedures. The Zytel HTN material provides excellent temperature stability, strength, durability, low moisture absorption, and retention of critical mechanical and electrical properties in humid, high temperature environments. The mounting gasket provides a consistent, controlled compression sealing of the bushing well to the apparatus tank wall.

PRODUCTION TESTS

AC 60Hz 1 Minute Withstand – 50 kV
Minimum Corona Voltage Level – 26 kV

Internal Chardon Quality Assurance requirements:

Physical Inspection
Periodic Dissection
Periodic Fluoroscopic (X-Ray) Inspection

INSTALLATION

The Chardon bushing well is installed on the tank wall of the oil (or approved equivalents) transformer or switchgear. The rubber gasket is placed in the groove on the rear side of the bushing well (facing the transformer or switchgear). The steel clamp is then placed over the bushing well, and through the threaded studs mounted on the tank wall. The clamp is then bolted in place.

VOLTAGE RATINGS

Standard Voltage Class	35 kV
Max. Rating Phase to Phase	36.6 kV
Max. Rating Phase to Ground	21.1 kV
Ac 60 Hz 1 Minute Withstand	50 kV
DC 15 Minute Withstand	103 kV
BIL and Full Wave Crest	150 kV
Minimum Corona Voltage Level	26 kV

CURRENT RATINGS

Description	Test Parameters
Continuous	200 amps rms
Short Time	<ul style="list-style-type: none">• 10,000 amps rms symmetrical for 0.17 s• 3,500 amps rms symmetrical for 3.0 s

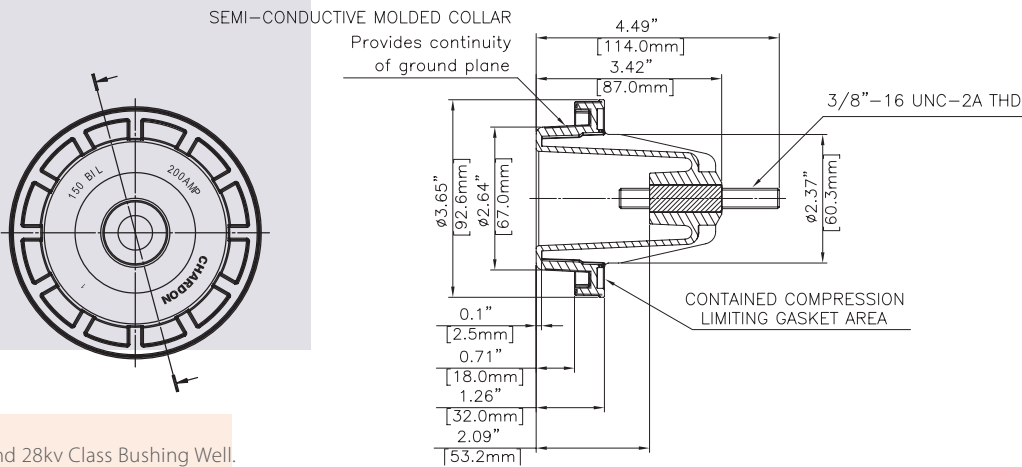


Figure 1: 200A 15,25 and 28kv Class Bushing Well.

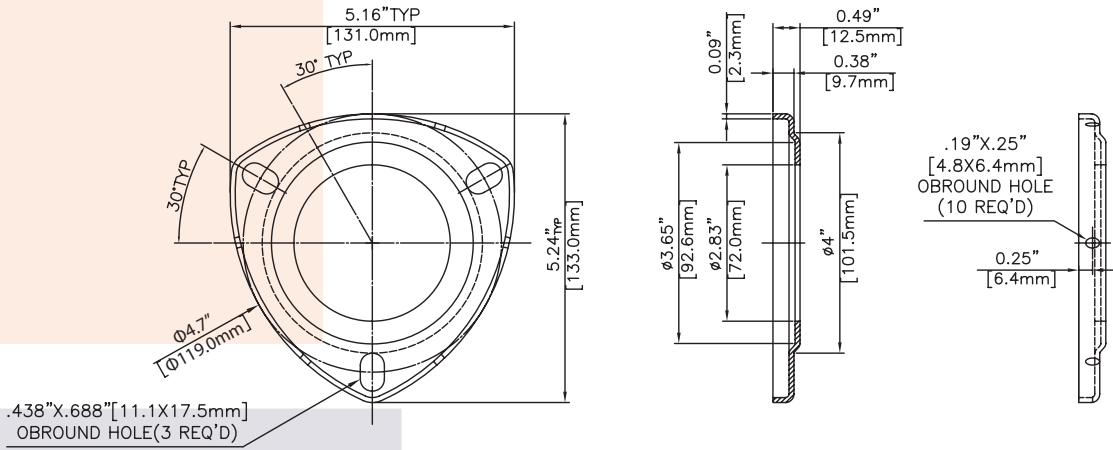


Figure 2: Stud Clamp with flange.

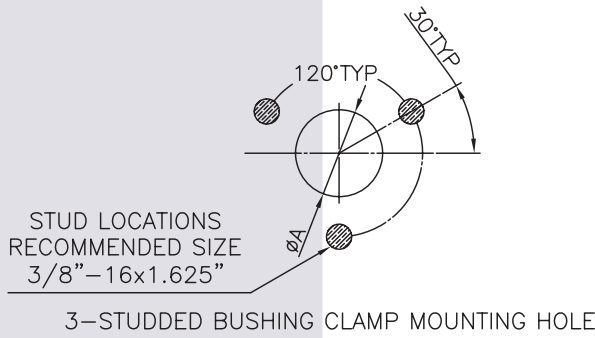


Figure 3: Recommended tank wall dimensions.

MOUNTING HOLE
A DIM-2.56"/65.02mm

ORDERING INFORMATION

Description	Catalog Number	Refer To Figure
BushingWell	CH200BW	1
Bushing Well with 3-hole Clamp, Mild-Steel-Zinc-Dichromate plating	CH200BW3ZD	2
Bushing Well with 3-hole Clamp and Flange, Stainless Steel	CH200BW3SS	2

To order a Chardon 200A Bushing Well, specify the clamp from Table 3.

HABLEMOS



hablemos@ink-energy.com



+54 9 11 2049 8728



[linkedin.com/ink-energy](https://www.linkedin.com/company/ink-energy)



[ink-energy.com](https://www.ink-energy.com)